

# MAINTENANCE OVER YEAR

## Every Spring...

- Replace the **BrHEAThe MERV 8** paper filter
- Replace the **BrHEAThe MERV 13** paper filter
- Check the **boiler** for leaks/problems



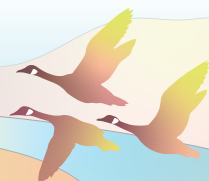
## Every Summer...

- Replace the **BrHEAThe MERV 8** paper filter
- Clean your **chimney** if you used your woodstove regularly
- Have your **boiler** serviced and change the **fuel filter** outside
- Test your **smoke alarms** and replace back-up batteries if necessary



## Every Autumn...

- Replace the **BrHEAThe MERV 8** paper filter
- Replace the **BrHEAThe MERV 13** paper filter
- Clean your **HRV filters** and the **core**
- Check your **outdoor hoods** and clear of any debris
- Check the **boiler** for leaks/problems



## Every Winter...

- Replace the **BrHEAThe MERV 8** paper filter
- Check the **boiler** for leaks/problems
- Empty **condensate bucket** under HRV as needed

